

The value of outcome measurement in speech and language therapy services

*Kathryn Moyse
RCSLT Outcomes and Informatics Manager
kathryn.moyse@rcslt.org*

*Sue Koziel
Lead Speech and Language Therapist – Preschool
Abertawe Bro Morgannwg University Health Board*

RCSLT Outcomes Programme

National influencing and projects

RCSLT Online Outcome Tool

Measuring the impact of children's universal/targeted SLT services

Developing a set of core measures for each clinical area

Therapy Outcome Measures

[Home](#) | [My Dashboard](#) | [Patients](#) | [Reports](#) | [Resources](#) | [Secure File Upload](#) | [Import Data](#)

You are here: [Home](#) → [Patient Search](#) → [Anonymous Patient \(T01\)](#) → [Episode:](#) → [Start of Episode \(15 Aug 2018\)](#)

Communication and Swallowing Disorder (Primary): Expressive language disorder;

Communication and Swallowing Disorder (Additional): Receptive language disorder;

Primary TOMs Scale: Child Language Impairment

Secondary TOMs Scale: Dysfluency

Date of rating: 15 Aug 2018

Rating Type: Start of Episode

Impairment
(Child Language
Impairment):

N/A	0	0.5	1	1.5	2	2.5	3	3.5	4	4.5	5
-----	---	-----	---	-----	---	-----	---	-----	---	-----	---

Edit

Impairment
(Dysfluency):

N/A	0	0.5	1	1.5	2	2.5	3	3.5	4	4.5	5
-----	---	-----	---	-----	---	-----	---	-----	---	-----	---

Edit

Activity (Child
Language
Impairment):

N/A	0	0.5	1	1.5	2	2.5	3	3.5	4	4.5	5
-----	---	-----	---	-----	---	-----	---	-----	---	-----	---

Edit

Participation:

N/A	0	0.5	1	1.5	2	2.5	3	3.5	4	4.5	5
-----	---	-----	---	-----	---	-----	---	-----	---	-----	---

Edit

Wellbeing:

N/A	0	0.5	1	1.5	2	2.5	3	3.5	4	4.5	5
-----	---	-----	---	-----	---	-----	---	-----	---	-----	---

Edit

ABMUHB TOMs

Data Collection - So What
Work in Progress

Sue Koziel- Lead SLT Preschool

CLINICIANS- SUPPORTING DECISION MAKING

Child J

- Known since 2010
- Primary Language Unit
- Episode Contacts:13, Total Time: 605 minutes, 485 FTF, 120indirect
- Outcomes:

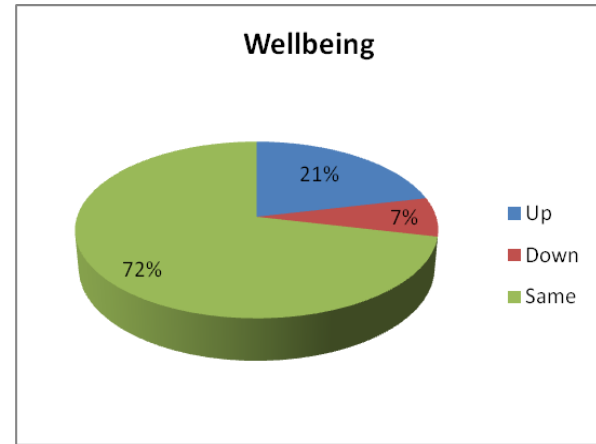
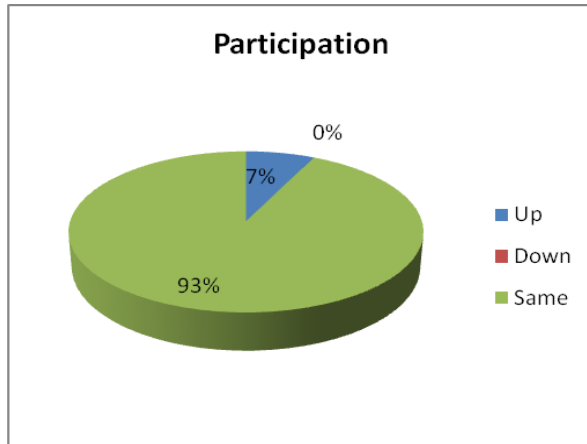
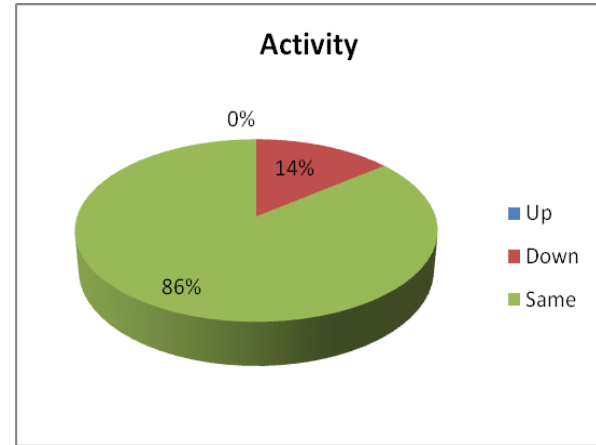
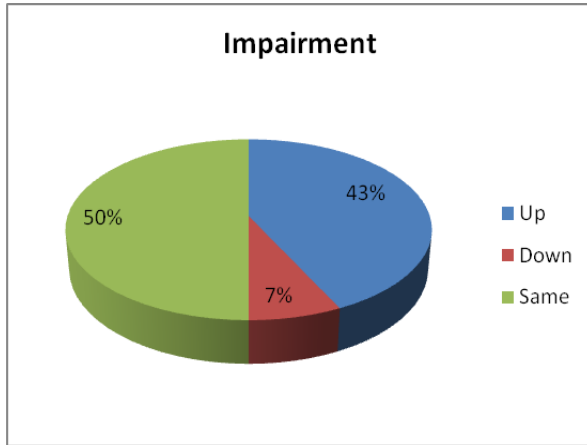
Date	I	A	P	W CH	W C
24.04.17	3	3.5	4	3.5	2
17.07.17	3	3.5	3.5	3	2
			-0.5	-0.5	

SERVICE MANAGERS-INFLUENCING SERVICE CHANGE

work by Jade Farrell ABMUHB Clinical Lead for Neurosciences

PARKINSONS DISEASE GROUPS

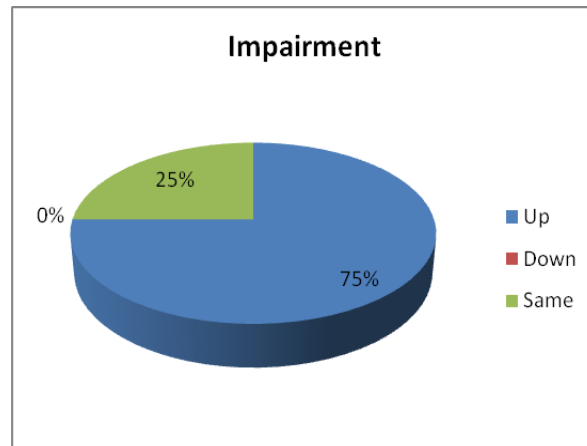
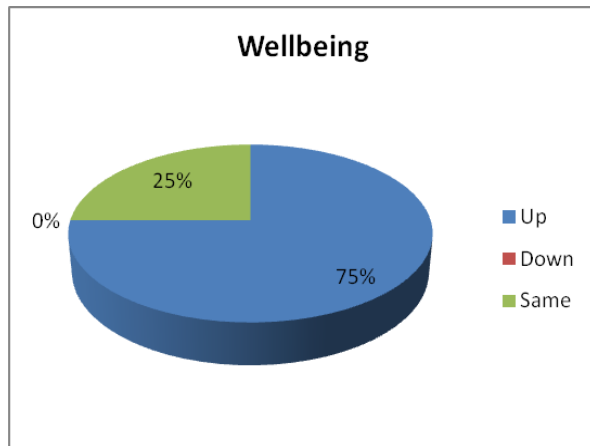
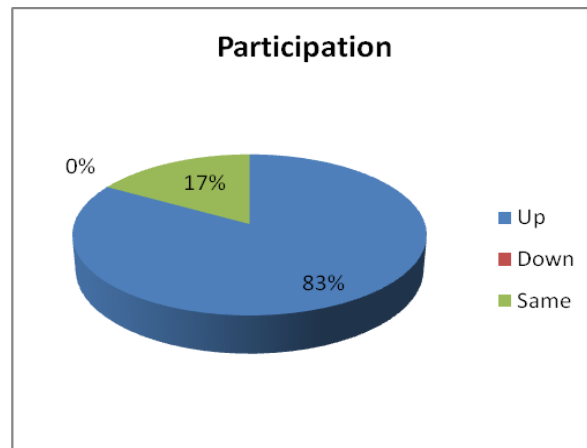
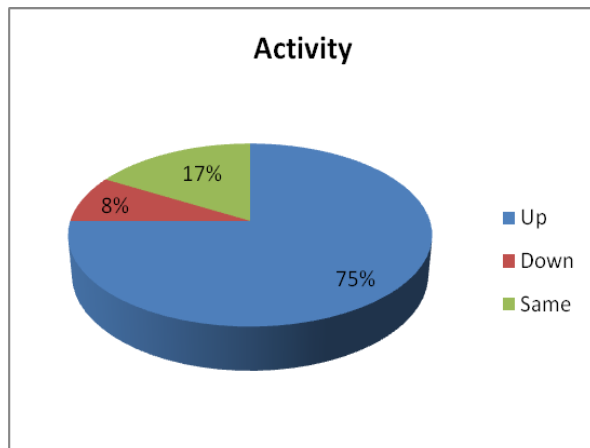
Mild Difficulties - Median Score 4



Outcomes – Mild Difficulties Group

- Group started with median score of '4' (mild difficulties) across all parameters.
- 86% of patients either maintaining or improving their scores in all domains.
- This can be seen as a significant improvement.

Advanced Difficulties - Median Score 3



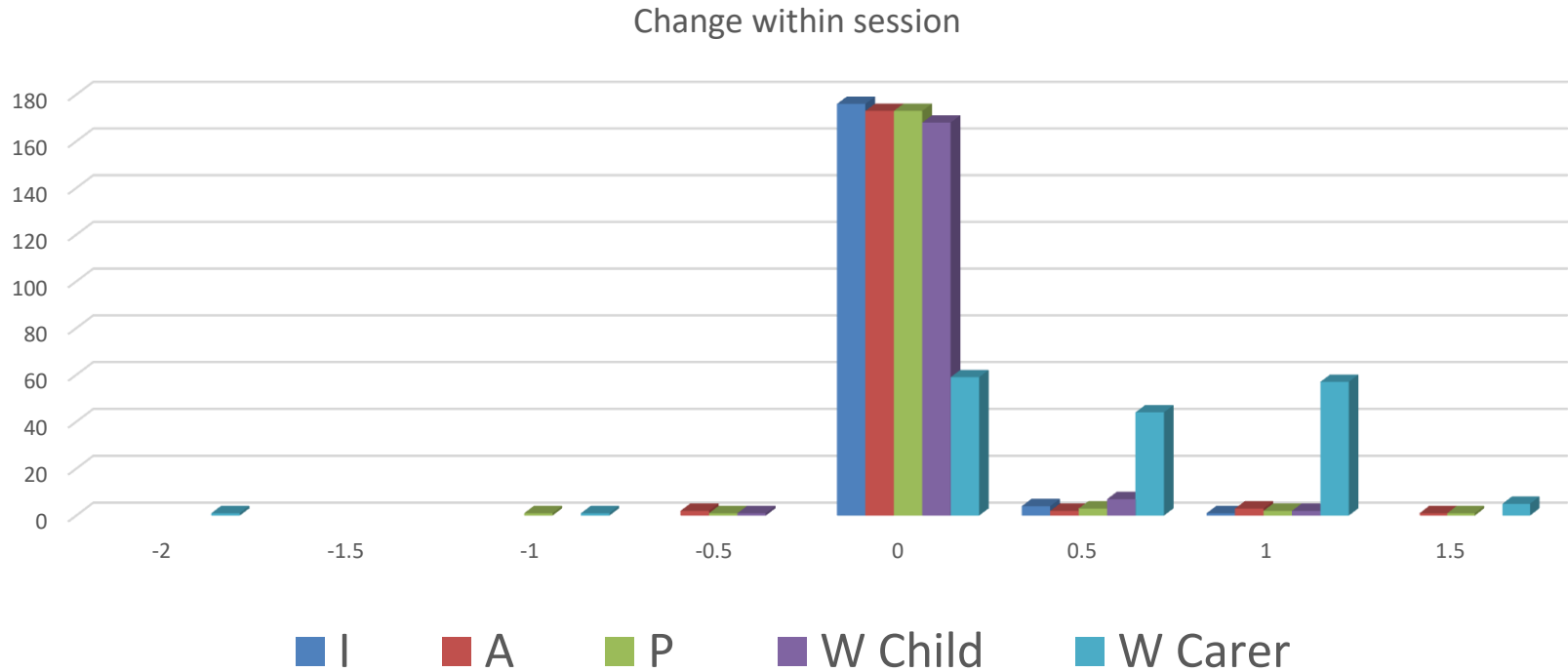
Outcomes Advanced Difficulties Group

- Positive outcomes with either maintenance or improvement in all domains
- SLT intervention was successful for this cohort as well as those with milder difficulties.

Preschool Service

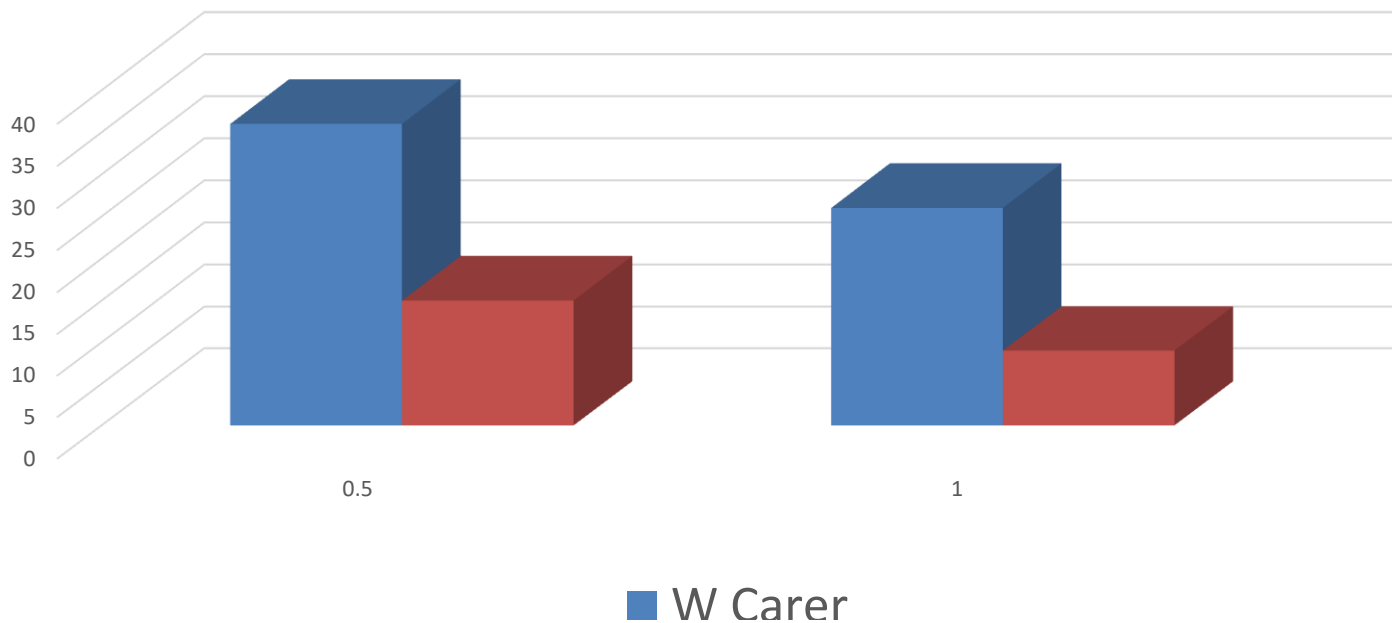
- Paper based triage of referrals leading to initial assessment
- 42% children attending for initial assessment closed after one contact.
- Clinicians strongly felt assessment was still appropriate as Parents valued advice given and this had positive impact on their wellbeing.
- Analysed 120 children attending Core SLT appointments who were closed after 1 contact

Outcomes following one contact



Drilling Down on Reported Improvement in Wellbeing

Carer Wellbeing



TOMs data supporting need for change

- 52/120 had a starting rating of 4+
- Outcome: Review of our pre-school pathway with provision of pre-referral advice sessions

EXAMPLE OF INFLUENCING FUNDING

Patient J

Complex Brain Injury

J was discharged home from ward in Nov 2016

Outstanding goals were identified that could be achieved with further input

Delivery Unit funded an additional 0.20wte of speech and language therapy for 3 months ending 31st January 2017.

As part of her discharge planning to facilitate her re-integration back into her community so J was able to access the specialist skills of a therapist specialising in complex brain injuries

J made steady progress as evidenced against the Enderby and John (2015) Therapy Outcome Measures

Nonetheless still had progress to make

Patient J
Complex Brain Injury

On admission to therapy,
impairment and wellbeing
ratings scored 0

Intermediate rating at
discharge from ward

Final rating following
additional period of funding

