

Delivering Better Outcomes for Children: the Northern Ireland Context



Presented by:
Maurice Leeson
Children's Services
Planning Professional
Advisor

Content of Presentation

- **Delegates will understand the NI policy landscape**
 - Early intervention Family Support
 - Evidence informed and outcomes focussed
 - Change and transformation through integrated working
- **Delegates will understand the delivery mechanism for these policies**
 - CYPSP
 - EITP



2006 Children's Strategy - Our Children and Young People: Our Pledge

What we want to achieve for all our children- High Level Outcomes:-

- Enjoying Learning and Achieving
- Experiencing Economic and Environmental Wellbeing
- Contributing Positively to Community and Society
- Living in Safety with Stability
- Healthy
- Living in a Society that Respects their Rights

“making a gradual shift to preventative and early intervention approaches *without compromising those children and young people who currently need our services most*”





How are Children & Young People in NI doing? Northern Ireland Outcome Monitoring Report with Trends 07 – 13/14



Improving Outcomes

Information to Support Integrated Planning for Children and Young People
in Northern Ireland
Date: October 2014

How are our children Doing?

- 124,382 children aged under 5 on census day 2011 (NISRA 2013)
- 24,227 births between April 2013 and March 2014
- 25,988 children in need (DSF 13/14 Report)
- 2858 children looked after on 31 March 2014
- 28/1000 pupils in NI Primary schools are statement



NI Family Support Policy-Families Matter 2009

“This strategy gives priority to prevention and early intervention in supporting families to parent confidently and responsibly, especially when they are facing difficulties”

Key Themes

- Information for parents and service planners
- Access
- Supporting Families and Parents
- Working Together for Families and Communities



Families Matter 2009 Principles

- Policy development and planning decisions should be based on evidence
- The evaluation of outcomes should be open and transparent to all
- Encourage all stakeholders...to work together in partnership



Programme for Government in Northern Ireland 2011-15

- Creating opportunities, tackling disadvantage and improving health and wellbeing
 - Improved health and wellbeing for people from deprived areas
 - Reduced health inequalities
- Deliver a range of measures to tackle poverty and social exclusion through the Delivering Social Change delivery framework



2013 Delivering Social Change (OFMDFM)

- “the need for more joined up planning and commissioning of services. The most persistent problems associated with deprivation and social exclusion cannot be addressed by individual services or even sectors working in isolation”
- “Major societal change cannot be achieved through a piecemeal approach which relies on many pilot projects, but on sustained adaption of mainstream services towards those interventions that provide the best results in the medium to long term”



DSC-Children and Young Persons Early Action Document

“We believe the most significant opportunities to improve peoples health wellbeing and life opportunities exist in the form of early interventions and services, particularly (but not exclusively) designed for children and young people”

This includes-Poor physical and mental health

- Early intervention
- Integrated delivery



Making Life Better 2014

Aim- achieve better health and wellbeing for everyone and reduce inequalities in

Key Theme- 'Giving every child the best start in life'

Outcomes associated with this theme

- good quality parenting and family support
 - healthy and confident children and young people
 - children and young people skilled for life
-
- **Action and commitments 2013-15**

'additional and tailored support to those who need it, for example families with children with a learning or physical disability, young children with speech, language and communication needs, traveller children'



Transforming Your Care 2011

- Placing the individual at the center of any model by promoting a better outcome for the service user, carer and their family
- Using outcomes and quality evidence to shape services
- A focus on prevention and tackling inequalities
- Integrated care-working together
- Ensuring sustainability of service provision



Policy Themes

- Early Intervention Family Support
- Collaboration in Planning and Delivery
- Outcomes
- Evidence Informed/Evidence Based
- Delivering Services Differently



Integrated Planning and Delivery -The Children and Young Peoples Strategic Partnership

The CYPSP is a cross-sectoral strategic partnership consisting of the leadership from all key agencies who have responsibility for improving outcomes for all children and young people in Northern Ireland

Health
Social care
Education
Youth justice
Probation
Police
Local Government
Voluntary/Community/BME



Strategic Policy Context - Children's Services Planning Approach

- **The Children (1995 Order) (Amendment) (Children's Services Planning) Order 1998**
 - Requires every Health and Social Services Board to prepare and publish plans for the provision of children's services within its area and to keep those plans under review. In preparing or updating its plans, a Health and Social Services Board is required to consult Health and Social Services trusts, education and library boards, district councils, certain voluntary organisations, the Northern Ireland Housing Executive, the Probation Board for Northern Ireland, the police and other relevant bodies. The Department of Health and Social Services may require a Health and Social Services Board's plan to be submitted to it at any time.



Children's Services Planning Guidance 1998 (DHSS/DENI/NIO)

Aims of Children's Services Planning

- Promote the welfare of Children
- Clarify strategic objectives in relation to services
- Promote integrated provision of service and effective use of available resources
- Ensure consistency of approach to planning
- Promote high standard of coordination and collaboration between *HSCB and Trusts* and between social care and health services
- Establish a high standard of coordination and collaboration between *HSCB and Trusts* and other agencies and organizations which have a contribution to make to effective provision of local services
- Facilitate joint commissioning by agencies when it is seen as appropriate to meet the needs of children



Purpose of CYPSP

- Collaboration through integrated planning and commissioning in the context of the six NI high level Outcomes
- Outcomes Based Planning (Framework for Integrated Planning for Outcomes for Children and Families www.outcomesforchildren.org)
- Early Intervention
- Evidence Informed Practice
- Coordination of resources-people and money
- Single approach to children's issues from Government



Development of Outcomes Based Planning in Northern Ireland

- In 2004 CSP link with Vermont and Con Hogan
- 2004 Children's Services Planning adopts the Outcomes Based Planning Model
- CAWT Outcomes for Children Project 'implementation of an outcome approach to planning'. Development of Framework for Outcomes Based Planning produced and implemented North and South to CSP NI and South Children Services Committees
- CiNI training programme on Outcomes in partnership with HSCB



CYPSP Definition of Early Intervention

- Early years
- Early stage of difficulty (for families with children aged 0-18)
- Early Intervention is intervening early and as soon as possible to tackle problems emerging for children, young people and their families or with a population at risk of developing problems. Early Intervention may occur at any point in a child's life (Grasping the Nettle Report C4EO 2009)

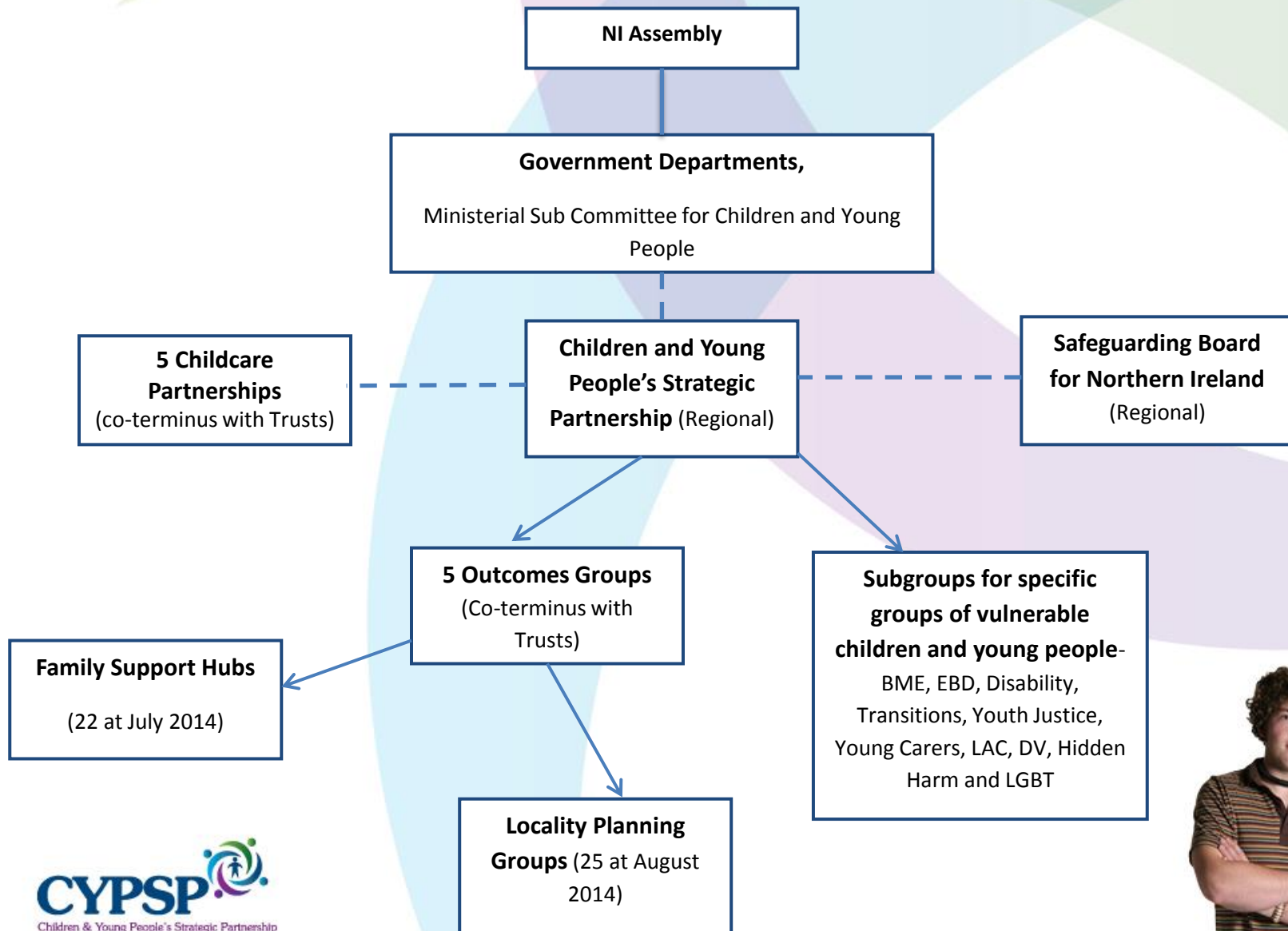


Model of Prevention (Statham and Smith 2010)

- Preventative-stopping problems occurring in the first place
- Protective-target vulnerable people
- Remedial/Therapeutic-early onset of problems



CYPSP Structure



Integrate Planning and Commissioning to Improve Outcomes - 5 Outcomes Groups

- 5 multi agency planning groups
- Assessing need
- Developing integrated planning and commissioning
- Commissioned additional family support services linked to Hubs
- Support to Family Support Hubs and Locality Groups
- Linking with other planning partnerships to avoid duplication



Integrate Planning and Commissioning to Improve Outcomes - Locality Planning Groups

- 27 Locality Planning Groups developing low cost and no cost solutions to local problems
- Raising awareness of family support service and building a local constituency of support
- Linking communities, politicians with local services
- Accessing small amounts of money to drive change
- Embedding outcomes based planning in local communities
- Dialogue with community about service planning and development-EITP



Early Intervention as 'Remedial/Therapeutic' -Access to a Network of Support - Family Support Hub

A Family Support Hub is a multi-agency network of statutory, voluntary and community organizations that either provide early intervention services or work with families who need early intervention services. The network accepts referrals of families who need early intervention family support and uses their knowledge of local service providers to signpost families with specific needs to appropriate services.



Purpose of Family Support Hubs:-

- To improve access to early intervention family support services by matching the needs of referred families to family support providers
- To improve coordination of early intervention family support services by creating a collaborative network of providers
- To improve awareness of family support services
- To assess the level of unmet need for early intervention family support services and inform the relevant Outcomes Group



Early intervention as 'Protective' The Role of the 10 Regional Subgroups - Outcomes Based Planning for Specific Groups of Children and Young People

- Carry out integrated planning for specific groups of vulnerable children and young people on a **regional** basis
- Specific emphasis on sharing resources across agencies to improve outcomes for children and young people.
 - BME
 - Children with Disabilities
 - Transitions
 - Domestic and Sexual Violence (with RSG)
 - **Children Young People and Offending**
 - Think Family (with HSCB)
 - LGBT Young People (with PHA)
 - LAC 16+
 - Young Carers
 - Children and Young People with Emotional and Behavioural Difficulties



An Emerging Early Intervention Infrastructure:-

- A Family Support Hub in every area sign-posting families **to...**
- Other Commissioned local Family Support Services **and...**
Statutory Services with an Early Intervention Focus **and...**
- With access to Range of Evidence Based Parenting Programmes (PHA) **and...**
- With access to a new Early Intervention Service



Early Intervention Transformation Programme

The coming together of six Government Departments and private philanthropy, as part of the Delivering Social Change initiative, to jointly fund a programme of early intervention.

The programme will seek to:-

1. **equip all parents with the skills needed to give their child the best start in life**
2. **support families when problems first emerge, out -with the statutory system**
3. **positively addressing the impact of adversity on children by intervening both earlier and more effectively to reduce the risk of poor outcomes later in life**



Focus of Early Intervention Transformation Programme

1. Working together / pooling resources to focus on prevention and earlier intervention
2. Achieving transformational change by:-
 - doing things differently to achieve different outcomes – which may require brave decisions to stop doing some things, to invest in other interventions which are more effective
 - Using evidence more effectively
3. Using data and outcome indicators to both drive improvement & demonstrate change



EITP Work Stream 1

- A Universal Offer
- Focus on resilience building
- Three delivery components:-
 - Getting Ready for Baby
 - Getting Ready for Toddler
 - Getting Ready to Learn



EITP Work Stream 2

- Inevitably, despite supporting all parents to give their child the best start in life, some families will need extra support to prevent early problems getting worse.
- Core components:-
 - Family Support Hubs
 - PHA Parenting Programmes
 - Early Intervention Service



EITP Work Stream 3

- Positively addressing the impact of adversity on children by intervening both earlier & more effectively to reduce the risk of poor outcomes later in life
- There will always be a small number of families who regardless of the support and help offered, are unable or unwilling to provide the care, safety and protection that children need. This strand of work will support new approaches within mainstream services to intervene earlier and more effectively to enable children in these families to be cared for safely and appropriately and helped to grow into confident, well-adjusted adults who can fulfil their potential within society
- Vulnerable Families/Concurrent Planning/EDGES/Belfast Intensive Family Support Project/Parenting Support to Young People Leaving Secure



Interventions at other levels

- Youth Justice pilot
- 54% of young people screened had speech language and communication needs (England and Wales 60%)
- Pilot suggested that 79 of the young people screened (78%) could have their needs met by a suitably trained youth justice worker
- 17 of the young people (22%) were assessed as needing a referral to a specialist SLT

[\(Orlaith.mcgibbon@doj.x.gsi.gov.uk\)](mailto:Orlaith.mcgibbon@doj.x.gsi.gov.uk)



Learning about Implementation

1. No one 'magic bullet' to improving outcomes for children
2. Engagement with community key to approaches most likely to work
3. Effective approaches from elsewhere can work here but attention needs to be paid to fit/local context
4. Home grown programmes to improve outcomes can be effective
5. Organizational readiness for implementation is crucial
6. Invest in capacity for evaluation

(Organisational Learning-Prevention and early Intervention in Children and Young Peoples Services. CES (December 2012))



Learning from Implementation-Child Health and Development

- Integrated working/co-location
- Locating services in areas of disadvantage
- Be inclusive of fathers

“When implementing a prevention and early intervention initiative to improve child health, indicators of health improvement need to be based on evidence and linked with national policy targets”

Child Health and Development-Prevention and Early Intervention in Children and Young Peoples Services. CES (September 2013)

<http://fpg.unc.edu/node/646> Implementation Science



How will we know if we have been successful?

EITP Performance Model using the CYPSP information system-

- supporting the process through the information system
<http://www.cypsp.org/maps-demographic.html>
- Tracking indicators over time 'turning the curve' outcome monitoring reports <http://www.cypsp.org/publications.htm>



Mothers Breastfeeding at Discharge

Data So **ALTHY**

Source: CHS

Areas shaded red are performing poorer than NI average and are areas for concern if consistently shaded

Indicators of Child Health March 2006 to March 2011

- * Figures suppressed

Wards	Multiple Deprivation 2010		Total Number of Births						At Dec % Mums smoking during pregnancy				Children Breastfed at Discharge from Hospital (%births)					
	Rank (n=582)	20% Most deprived in NI	2006	2007	2008	2009	2010	2011	2008	2009	2010	2011	2006	2007	2008	2009	2010	2011
BELFAST																		
ANDERSONSTOWN	118	X	38	53	50	45	47	48	29	25	20	37	26	23	12	22	30	31
ARDOYNE	9	✓	115	92	113	116	118	121	50	47	45	45	10	8	19	9	16	19
BALLYHACKAMORE	493	X	48	64	93	57	93	77	10	6	*	5	58	77	62	61	73	75
BALLYMACARRETT	18	✓	70	71	73	90	75	94	39	36	42	33	16	14	21	19	16	20
BALLYNAFEIGH	251	X	68	65	62	78	59	91	14	13	17	9	66	71	65	62	68	71
BALLYSILLAN	157	X	78	67	79	84	84	80	28	26	28	24	27	28	39	25	33	43
BEECHMOUNT	34	✓	96	90	111	89	107	89	32	32	36	29	28	36	22	31	31	35
BELLEVUE	155	X	60	64	66	78	84	75	27	31	28	25	32	39	29	27	48	35
BELMONT	444	X	60	65	59	81	79	79	16	17	7	21	57	45	63	58	53	52
BLACKSTAFF	42	✓	64	63	73	69	59	74	33	40	27	43	30	24	37	39	44	47
BLOOMFIELD (BELFAST)	196	X	76	73	80	84	87	77	22	25	16	18	58	38	41	60	53	60
BOTANIC	237	X	46	52	51	69	58	85	18	25	25	15	59	48	63	52	52	53
CASTLEVIEW	230	X	50	58	74	73	72	63	21	20	27	21	58	43	49	47	49	46
CAVEHILL	523	X	46	52	57	44	43	67	15	16	*	14	54	54	60	50	53	54
CHERRYVALLEY	542	X	67	72	82	64	67	67	9	*	*	4	57	67	61	72	75	72
CHICHESTER PARK	119	X	66	84	83	90	56	90	21	23	20	24	52	46	40	53	39	49
CLIFTONVILLE	64	✓	65	79	78	80	66	84	39	33	30	32	25	20	31	31	33	24
CLONARD	7	✓	66	67	87	91	110	96	46	35	34	35	23	25	23	14	22	28
CRUMLIN (BELFAST)	6	✓	45	65	55	55	56	71	38	47	44	38	22	17	13	13	23	15
DUNCAIRN	14	✓	65	53	61	63	85	76	39	38	48	33	29	30	26	27	33	28
FALLS	2	✓	51	76	73	83	89	88	46	41	45	37	10	9	11	20	10	17
GLASS PARK	101	✓	63	52	50	65	58	73	26	30	22	25	25	33	38	40	28	30
GLASSBORO	550	X	36	35	58	38	38	36	*	*	0	6	64	77	64	63	63	63

Area Performance Profiles



22 May 2010

New government guidelines for child services coming soon...

18 May 2010

SureStart Summer Scheme Initiative gaining momentum...

[More News & Events](#)



Family Support Services Directory

Welcome to the Northern Ireland Family Support Services Directory.

This directory provides details of a wide range of services offering support to families across Northern Ireland. It brings together comprehensive and up-to-date information about services for children, young people, their parents and carers.



SEARCH DATABASE

Choose a service



OR

Keyword Search

Select district council



SEARCH

A - Z SERVICE DIRECTORY

[A](#) [B](#) [C](#) [D](#) [E](#) [F](#) [G](#) [H](#) [I](#) [J](#) [K](#) [L](#) [M](#) [N](#) [O](#) [P](#) [Q](#) [R](#) [S](#) [T](#) [U](#) [V](#) [W](#) [X](#) [Y](#) [Z](#)

Telephone Helpdesk

Talk to us now for help & advice...



Challenging Behaviour Courses

Click here to register...



Training Courses...



SureStart Summer Schemes

Find out what's going on in your area...

SureStart



Site Safe

All organisations in this directory have declared to HSCB that they have clear policy and procedures for Safeguarding children.

Get included in the Directory!

Department of Health,
Social Services and Public Safety
www.dhsspsni.gov.uk

Health and Social Care
www.hscni.net

More Information :-

- To learn more about our work visit our website www.cypsp.org
- To learn about our Population based accountability system www.cypsp.org/outcome-planning.htm
- To learn about early intervention services visit - www.familysupportni.gov.uk
- Follow us on twitter CYPSP Northern Ireland (@cypsp)
- Subscribe to our e-zine contact rachael.adams@hscni.net
- familysupportni.gov.uk

