



The
University
Of
Sheffield.

Ten years on: Language skills of young offenders in custody in England

Kim Turner

Postgraduate Researcher, University of Sheffield &
Lead SLT, HM YOI Feltham, BEH Mental Health NHS Trust



The
University
Of
Sheffield.

SLT & Young Offenders



Language and communication difficulties in juvenile offenders

Karen Bryan[†], Jackie Freer[‡] and Cheryl Furlong[§]

[†]European Institute of Health and Medical Sciences, University of Surrey,
Guildford, UK

[‡]Newcastle under Lyme PCT, Dresden, Stoke on Trent, UK

[§]Stockport PCT, St Thomas' Hospital, Shaw Heath, Stockport, UK

(Received 15 February 2006; accepted 6 October 2006)

Abstract

Studies of the prison population
with language and communication
difficulties. However, the
focus on specific



The
University
Of
Sheffield.

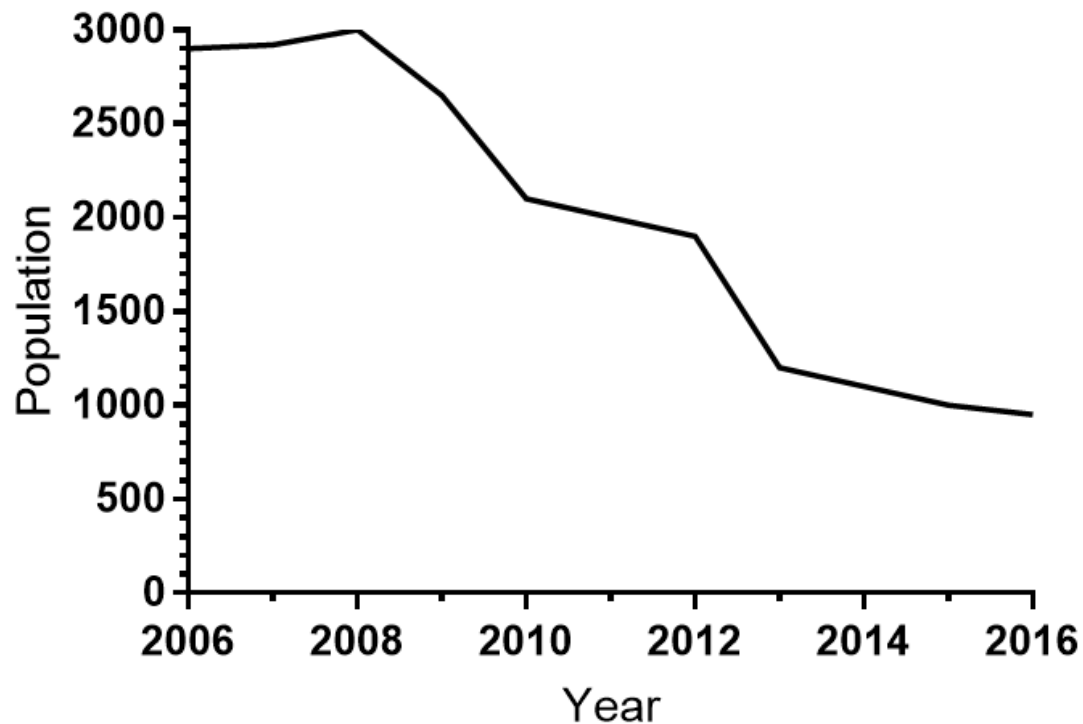
New SLT Services & Screening





Numbers in custody

Youth Custodial Population UK





The
University
Of
Sheffield.

DATA COLLECTION



Methods - Proposed





Methods - Actual

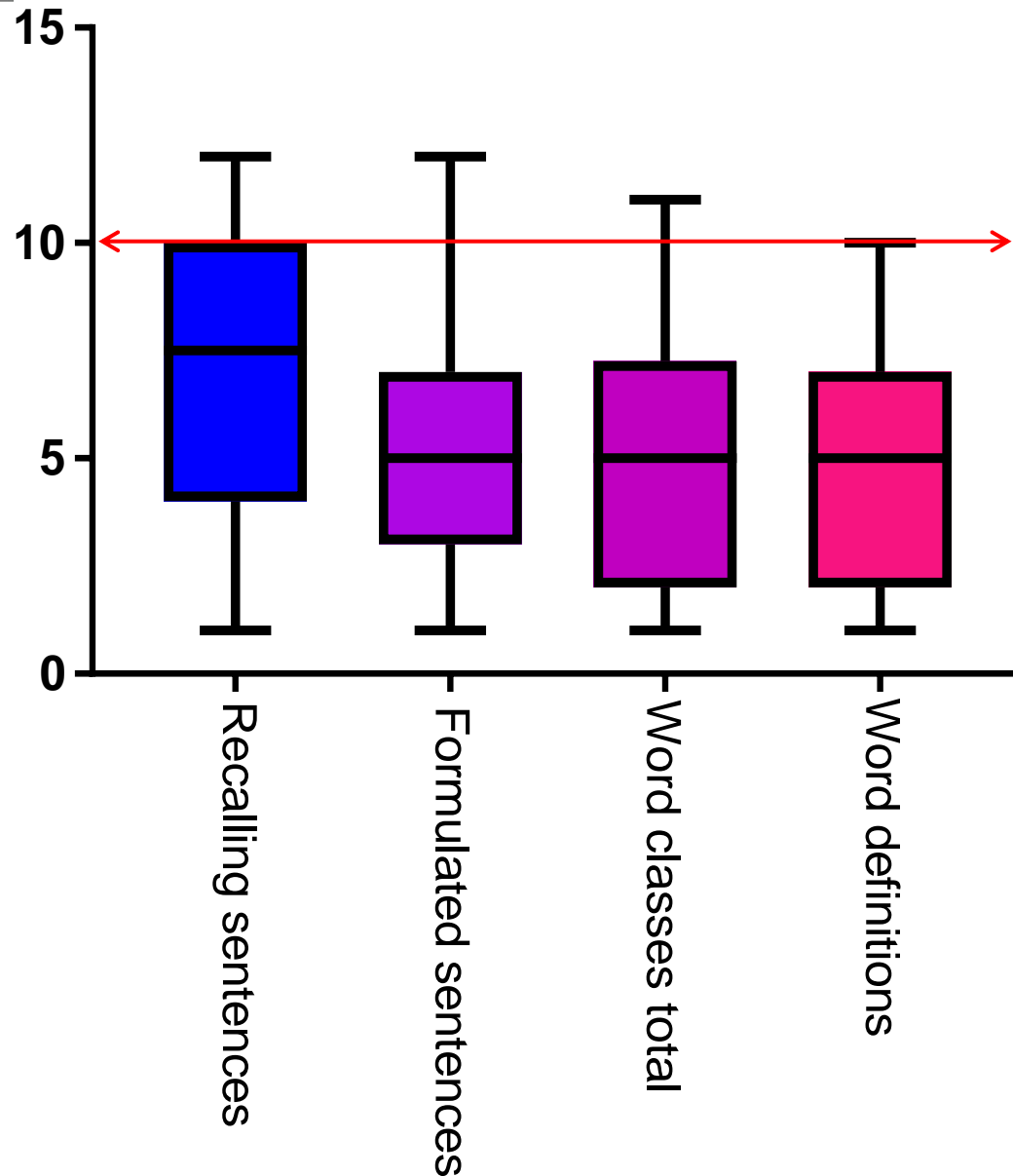
- 15 consecutive admissions
- And
- 30 subsequently referred to service =
 - 36 fully completed CELFs
 - 29 Social Skills Questionnaires
 - 30 speech ratings

Population

- N=45
- Age=17,2
- Ethnicity: 40% black, 27% white
- SES: 50% lowest, 6.6% highest third
- Av time in custody: 382 days
- 7 previously known to SLT services
- 23 previously known to CAMHS
- 19 LAC
- 27 expelled
- 34 cannabis users

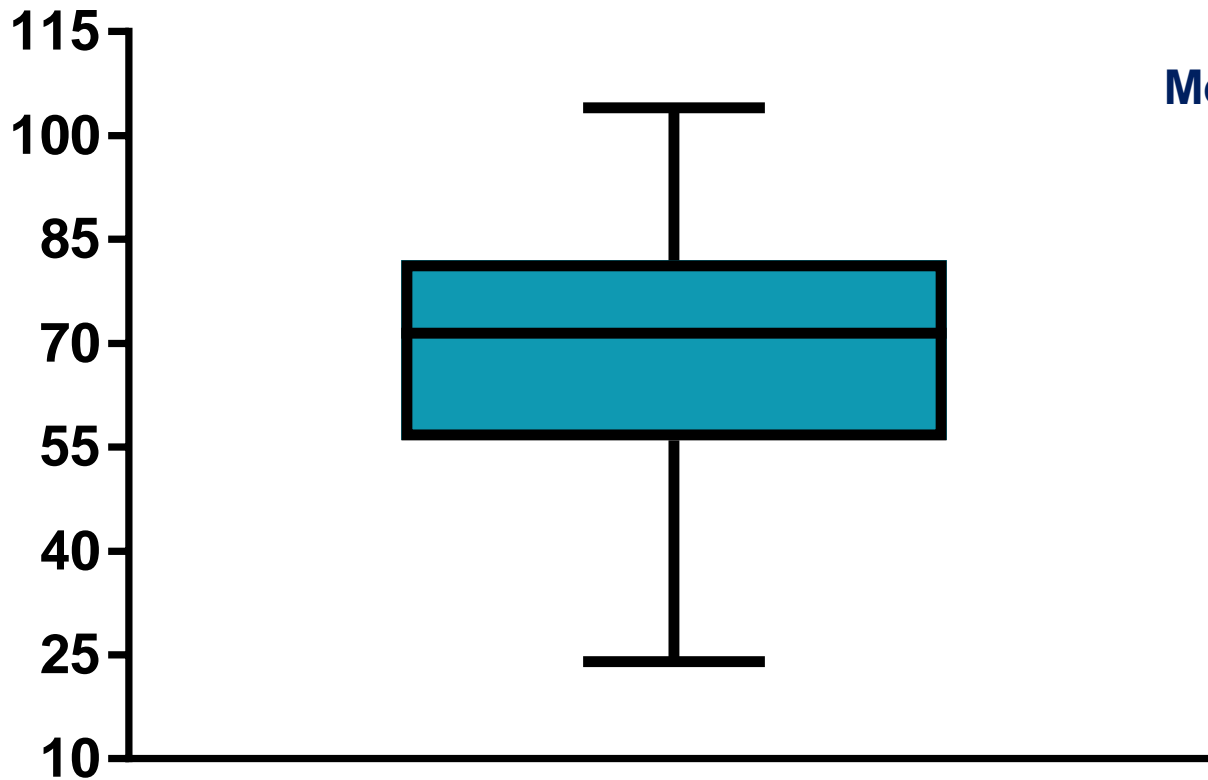


Core Language Scaled Scores





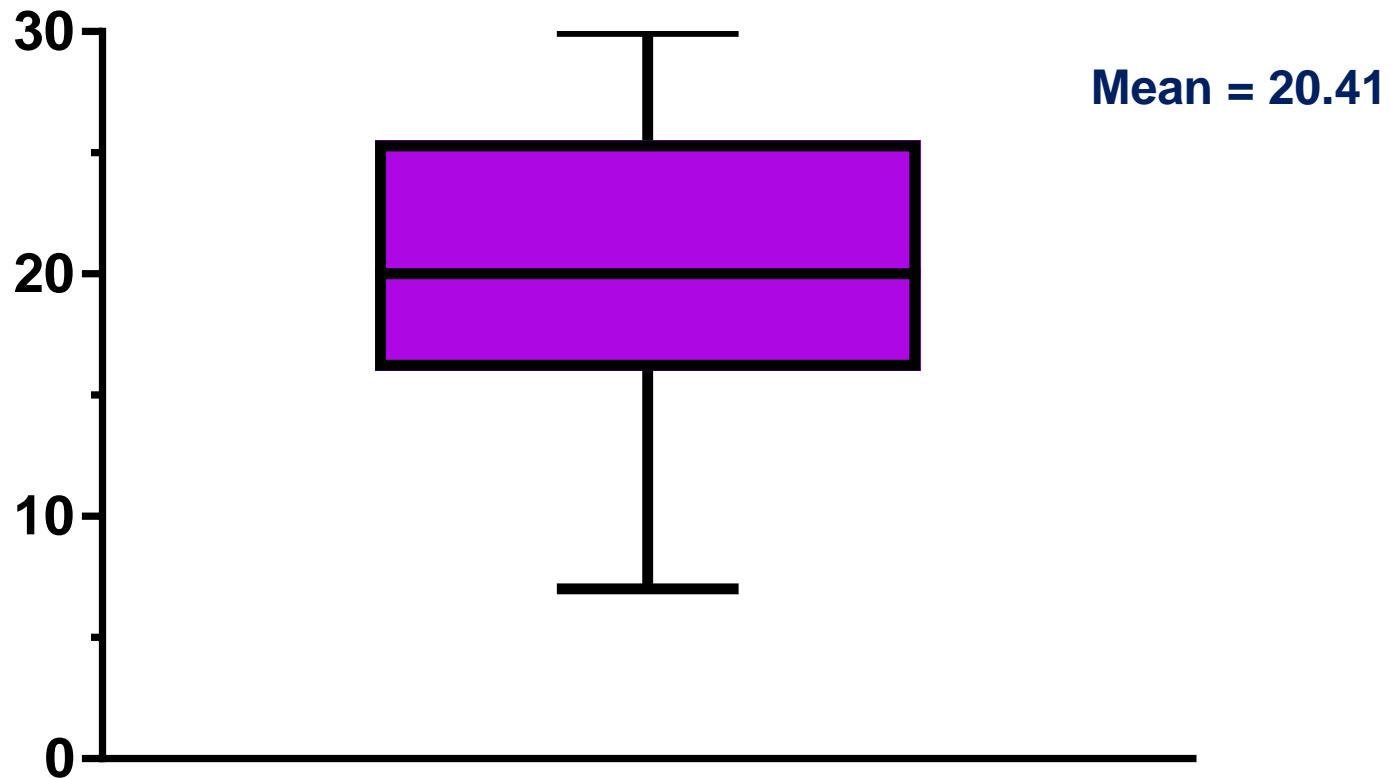
Standard Score



Mean = 70

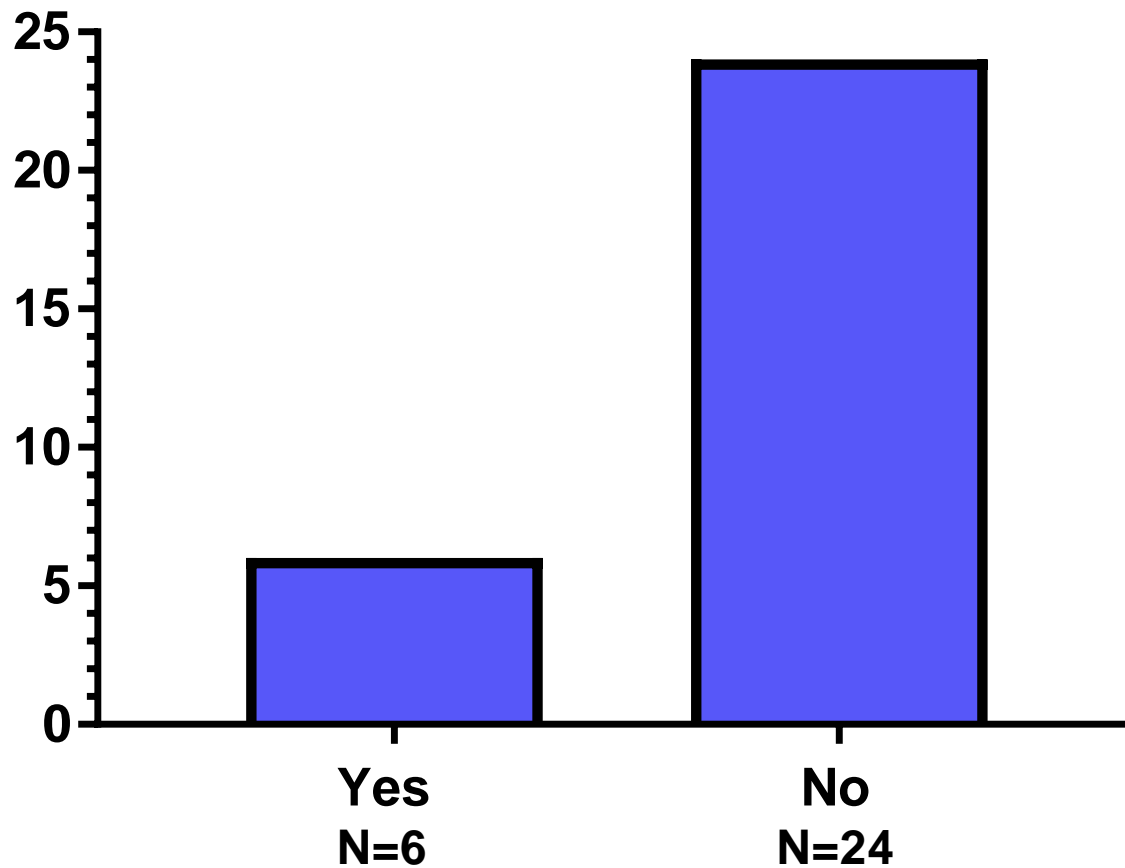


Social Skills Questionnaire



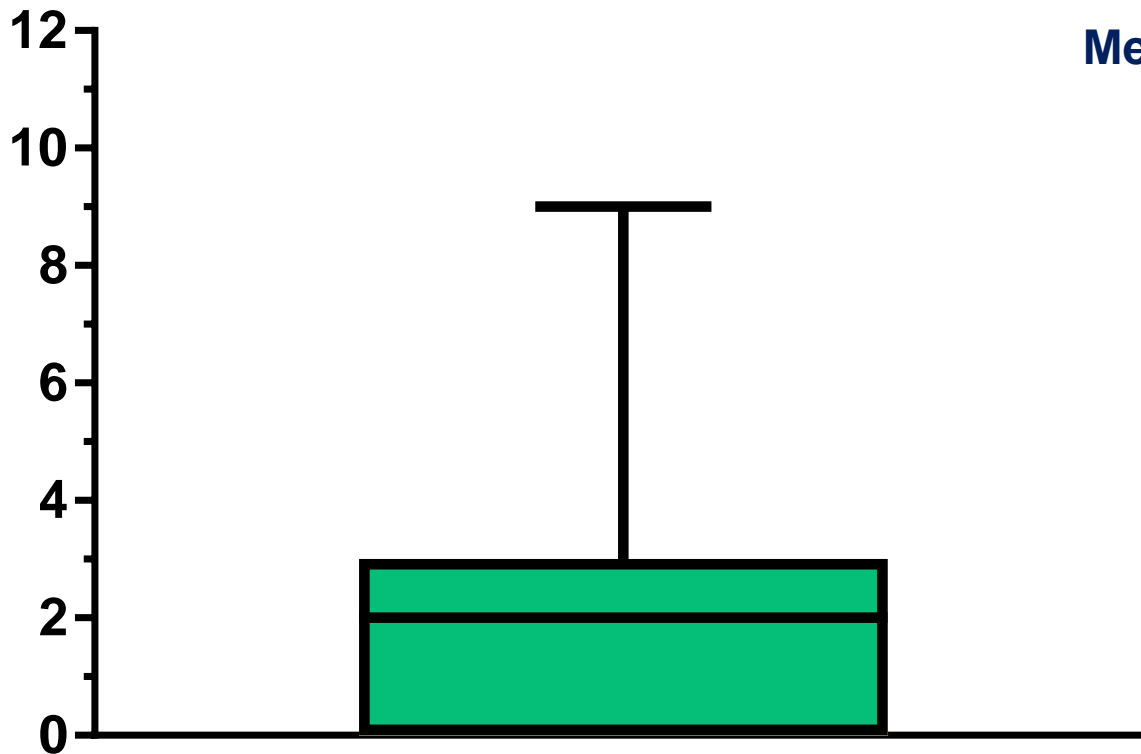


Speech Difficulties





CHAT Score



Mean = 2.12

Conclusions

- Majority have impaired language skills
- More likely to have accessed CAMHS and been excluded that accessed SLT
- Higher screening score does not necessarily lead to referral



Take Away

- Does your screen highlight those that need the support?
- Does the screen lead to the correct referrals?
- Are other factors taken in to consideration when looking at referrals?



The
University
Of
Sheffield.

